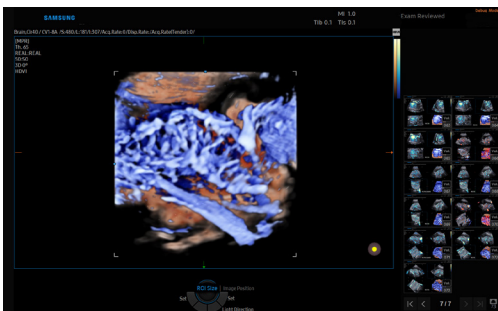


# HERA W10 Elite

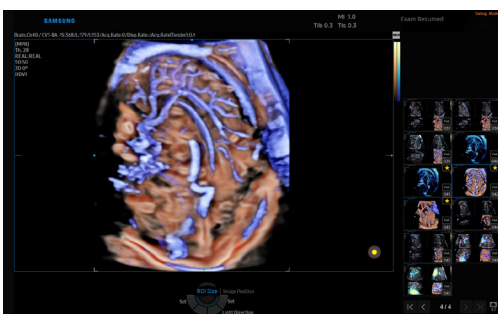
## Visionary Change

Samsung HERA W10 Elite, the premier model of the HERA platform, aims to step up as a visionary leader of Obstetrics and Gynecology applications. Elegant images, intelligently automated features, fast operation, and advanced ergonomics provide healthcare professionals with diagnostic confidence. All of these countless advantages are vividly conveyed through the 27-inch OLED monitor. HERA W10 Elite is our commitment to support the life-long healthcare of women, diligently pursuing new possibilities in ultrasound diagnosis.

**MV-Flow™ 3D** - is an advanced Doppler technology providing detailed documentation of microvascular perfusion into tissues and organs (available in 2D/3D mode).



Placenta using MV-Flow™ 3D



Fetal Brain using MV-Flow™ 3D



## Exquisite Image Quality

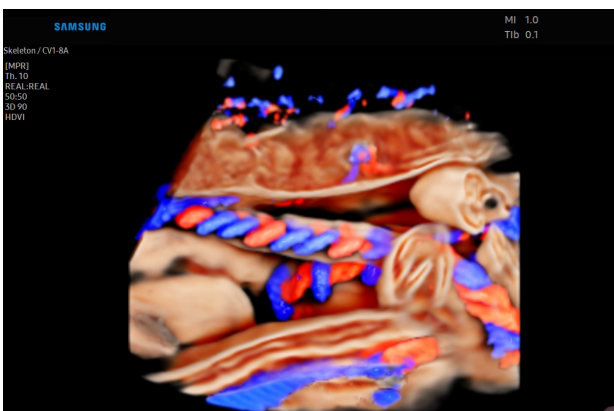
**LumiFlow™** - displays a three-dimensional "like" appearance to 2D color Doppler enhancing spatial comprehension of blood vessels.



**RealisticVue™** - displays high resolution 3D anatomy with exceptional detail and realistic depth perception.



**CrystalVue Flow™** - is an advanced volume rendering technology that enhances visualization of both internal and external structures in a single rendered image.

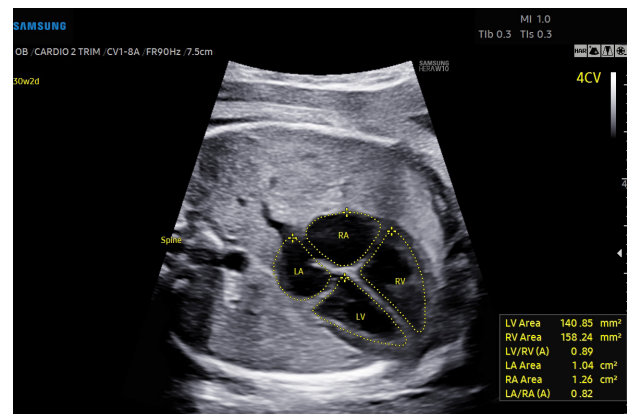


## Intelligent Assist Tools

**ViewAssist™** - provides automatic recognition and text labeling of fetal cardiac anatomy to enhance clinical documentation and workflow.



**HeartAssist™** - semi-automatic measurement feature designed to recognize and quantify fetal cardiac anatomy facilitating consistency of measurements and efficient workflow.



**Uterine Contour** - semi-automatic designation of the midline along the curvature of the sagittal endometrium and produces an instantaneous display of corresponding coronal planar view.

